

# ASHRAE Rochester



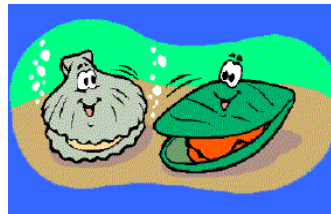
VOLUME 11, ISSUE 2

SEPTEMBER, 2016

## INSIDE THIS ISSUE:

Officer / Committee List	2
Events Calendar	3
President Msg	4
Clambake Info	5
Job Postings	6
Committee Updates	7
BOG Meeting Minutes	11
Student Membership Application	16
Region I Officers	18
Region I CRC Pictures	20
Buyers Guide	22
ASHRAE Keynotes	24
ASHRAE Society News	32

## ASHRAE Clambake Meeting info



- Topic:** State of the Construction Industry in Rochester with the Economic Development Grants & Photonics (PDH Pending)
- Presenter:** Aaron Hilger, ROBEX President
- When:** Monday September 19th, 2015 at 5pm
- Where:** Burgundy Basin Inn, Pittsford, NY

**Cost:** \$30.00 plus \$7.50 per dozen clams (No limit, Pre-order as many dozen as you want).

Tickets must be purchased by **September 12th**. No tickets will be sold at the door. **See clambake announcement on page 5** of this issue for specifics on how to make your reservation.

**Reservations are Required**

Statements made in this publication are not expressions of the Society or of the chapter and may not be reproduced without special permission of the chapter.



## Chapter Officers

### President

Jeff Close, PE  
(585) 289-6816  
jeff.close@pres-services.com

### President Elect

William J. Clark  
(585) 303-0729  
william.clark@DayAutomation.com

### Treasurer

Paul Kenna, PE  
(585) 261-0558  
pkenna@nrg-concepts.com

### Secretary

Tom Streber  
(585) 272-9450  
tstreber@jswanson.com

## Committee Chairs

### CTTC

Jeff Wiedrick (585) 325-8354  
jwiedrick@bergmannpc.com

### Grassroots Government Advocacy

Tom Burke (585) 429-3594  
tom.burke@wegmans.com

### Refrigeration Co-Chairs

Michael Nohle (585) 545-5522  
mnohle@meiersupply.com  
Sam Scorsone (585) 232-5135  
sscorsone@bergmannpc.com

### Historian

Jake Hall (585) 869-5125  
jhall@proairplus.com

### Membership

Mike Benedict (585) 490-2661  
mike@airsystemsbalancing.com

### YEA

Matt Kremers (585) 398-8018  
mkremers@mcsmms.com

### Student Activities

Rob Hudson, PE (585) 341-3187  
rhudson@ibceng.com

## Board of Governors

Tim Duprey (3)  
(585) 330-6430  
tduprey@rochester.rr.com

Branden Farnsworth-Weinblatt (3)  
(585) 364-1628  
bfweinblatt@poplgroup.com

Steve Dear (2)  
(585) 325-1290  
sdear@crosbybrownlie.com

Sam Scorsone (2)  
(585) 232-5135  
sscorsone@bergmannpc.com

Mike Benedict (1)  
(585) 490-2661  
mike@airsystemsbalancing.com

George Herman (1)  
(585) 219-5908  
george@hermanhvac.com

### Education

Bill Murray (585) 641-7121  
bmurray@ec4b.com

### Newsletter Editor

Scott Edwards (585) 301-6591  
ashraerocnews@gmail.com

### Attendance

Timothy Duprey (585) 330-6430  
tduprey@rochester.rr.com

### Publicity

Mark Kukla (585) 232-3440  
mark@airsystemsbalancing.com

### Research Promotion

Matt Devlin (585) 232-5135  
mdevlin@bergmannpc.com

### Webmaster

Steve Dear (585) 325-1290  
sdear@crosbybrownlie.com

### Nominating / Past President

Christina Walter (585) 486-2148  
cmwalter@trane.com

### Buyer's Guide

Marianne Schumacher (585) 217-3942  
marianne.schumacher@jci.com

# SAVE THE DATE

We are still working on programs for the year, but save the date!

ASHRAE 2016-2017 Meeting Schedule			
Date	Event	Theme	Location
Monday, 9/19/2016	State of the Construction Industry in Rochester with the Economic Development Grants <i>(presented by Aaron Hilger, ROBEX President)</i>	Membership Night	Burgundy Basin @ 5:00 PM
Monday, 10/17/2016	Highlights of the New Energy Code <i>(presented by Mike DeWein, Leidos Strategic Program Director )</i>	<i>(PDH Pending)</i>	City Grill @ 12:00 PM
Monday, 11/14/2016		<i>(PDH Pending)</i>	City Grill @ 12:00 PM
Monday, 12/12/2016	Impact of new EPA and DOE Regulations on Refrigeration and Cooling <i>(presented by Mike Nohle, MEIER Supply, Refrigeration Division Manager)</i>	Resource Promotion <i>(PDH Pending)</i>	City Grill @ 12:00 PM
Monday, 1/9/2017		<i>(PDH Pending)</i>	City Grill @ 12:00 PM
Friday, 2/3/2017	ASHRAE Valentines Dinner Dance	---	TBD
Monday, 2/13/2017		Membership Promotion <i>(PDH Pending)</i>	City Grill @ 12:00 PM
Monday, 3/13/2017		Resource Promotion <i>(PDH Pending)</i>	City Grill @ 12:00 PM
Monday, 4/10/2017	Refrigeration Tour	Refrigeration Night <i>(PDH Pending)</i>	TBD
Monday, 5/8/2017	Annual ASHRAE Golf Outing and Picnic <i>(Ravenwood Golf Course)</i>	---	9:30 AM Golf 4:30 - 8:00 Picnic

Note: Dates, topics and presenters are subject to change, but if this happens we will post any updates to the calendar on our website.

## Mission Statement

ASHRAE will advance the arts and sciences of heating, ventilation, air conditioning, refrigeration and related human factors to serve the evolving needs of the public and ASHRAE members.



Shaping Tomorrow's  
Built Environment Today

## Vision Statement

- will be the global leader in the arts and sciences of heating, ventilation, air conditioning and refrigeration.
- will be the foremost, authoritative, timely and responsive source of technical and educational information, standards and guidelines.
- will be the primary provider of opportunity for professional growth, recognizing and adapting to changing demographics, and embracing diversity.

# President's September Message

September Newsletter 2016  
President's Message

Welcome back to a new year of ASHRAE in Rochester! In the month of August (18th – 20th) our local chapter had the privilege of hosting the ASHRAE Region I - Centralized Regional Conference (CRC). This conference brought 100+ representatives from (15) regions across the Northeast together to have input into regional operations, receive training in the different leadership roles of governing the chapter and network with other chapters. While attendees were in Rochester we made sure to leave a lasting impression on them by highlighting some of our venues. The main conference was at the Hyatt Downtown where all the meetings occurred and our Friday night President's dinner. On Thursday the welcome dinner was held at the Penthouse at One East Avenue. While in town several folks took advantage of other scheduled events for our guests including, Genesee Brew House, George Eastman House, Artisan Works, and Strong Museum of Play.

I would like to thank all of our sponsors and CRC committee members for helping to make this a successful event. Platinum Sponsors for the event were Trane and R.F. Peck/LG.

CRC Chair – Jim Browe  
 CRC Co-Chair – Kacie Hoffman  
 CRC Secretary – Christina Walter  
 CRC Treasurer – Jeff Close  
 CRC Committee – Ed Burns  
 CRC Committee – Tim Duprey  
 CRC Committee – Matt Kremers  
 CRC Committee – Mark Kukla  
 CRC Committee – Don Middleton  
 CRC Committee – Pete Oppelt  
 CRC Committee – Michelle Sommerman



*Jeff Close, 2016-2017 President*

Planning for the 2016-2017 ASHRAE calendar year is underway. If anybody has any suggestions for monthly meeting topics or tours please contact our President-Elect and Program Chair, Bill Clark. He can be reached at [william.clark@dayautomation.com](mailto:william.clark@dayautomation.com).

Jeffrey Close, P.E.  
 2016-2017 President  
 Rochester Chapter

# ASHRAE CLAMBAKE



When: September 19<sup>th</sup>, 2016  
 Where: Burgundy Basin Inn  
 1361 Marsh Road Pittsford NY 14534  
 Time: 5:00 P.M.  
 Cost: \$30.00 plus \$7.50 per dozen clams  
 (No Limit, Pre-Order as many dozen as you want)

Tickets must be purchased by September 12<sup>th</sup>. No tickets sold at the door.

## ASHRAE CLAMBAKE Membership Promotion Night

Topic: Rochester Area Construction Outlook

Presenters: Aaron Hilger, Builders Exchange of Rochester, President.

Reservations: [www.rochester.ashraechapters.org](http://www.rochester.ashraechapters.org)



Walnut Grove Pavilion - Burgundy Basin Inn

**Directions:**

Take 490E to Exit 27 Bushnell's Basin. Turn right onto Pittsford Victor Road / Route 96. Take 2<sup>nd</sup> right onto Marsh Road. Burgundy Basin is over canal bridge on left.

**Buffet Menu:**

Baked Clams Casino, Scallops wrapped in bacon, Italian Sausage, Sliced Beef BBQ on Bun, Chicken BBQ, Mac & Cheese, Corn, Cole Slaw, Macaroni Salad, Southwest Bean Salad, Assorted

If you have questions contact Tim Duprey at (585) 471-8566 or e-mail to [tim.duprey@pres-services.com](mailto:tim.duprey@pres-services.com)

**Non-ASHRAE Members are Welcome!**

Cut Here

Make check out to **Rochester Chapter of ASHRAE** and mail with completed form to:  
ASHRAE Clambake, Attn: Tim Duprey, 98 Red Hickory Drive, Rochester, NY 14626

Name: \_\_\_\_\_ ASHRAE Member Yes No  
(Circle one)

Company: \_\_\_\_\_

Address: \_\_\_\_\_

City: \_\_\_\_\_ State: \_\_\_\_\_ Zip Code: \_\_\_\_\_

Number of Buffet Tickets: \_\_\_\_\_ x \$30.00 = Total \$ \_\_\_\_\_

Number of Dozen Clams: \_\_\_\_\_ x \$7.50 = Total \$ \_\_\_\_\_

Total Check Amount: \$ \_\_\_\_\_

**\*\* TICKETS CAN BE PICKED UP AT THE DOOR \*\***

Reservations must be mailed in by September 12<sup>th</sup>



This section of the newsletter is reserved for those firms wishing to advertise their desires to hire from the Chapters Membership.

If you are interested in utilizing this FREE service provided by the Rochester Chapter, please contact our Chapter President, Jeff Close at (585) 289-6816 or by email [jeff.close@pres-services.com](mailto:jeff.close@pres-services.com).

This service is available to ASHRAE members for any local firm in our industry looking for knowledgeable persons in the HVAC&R industry.

## Presidential Award Of Excellence



Download



Achievements



Report

Chapter:

Fiscal Year:

▶ Chapter Operations	Par: 1200	Min Points: 600	Total Points: 475
▶ Chapter Technology Transfer	Par: 1050	Min Points: 450	Total Points: 100
▶ Grassroots Government Advocacy	Par: 650	Min Points: 500	Total Points: 0
▶ Historical	Par: 300	Min Points: 100	Total Points: 0
▶ Membership Promotion	Par: 800	Min Points: 500	Total Points: 400
▶ RP	Par: 1050	Min Points: 800	Total Points: 0
▶ Student Activities	Par: 500	Min Points: 300	Total Points: 850

## Like us on Facebook!

Visit our new Facebook page by searching for “ASHARE Rochester” on Facebook. Any ideas for additions or improvements email to Mark Kukla at [mark@airsystemsbalancing.com](mailto:mark@airsystemsbalancing.com). Keep up to date with current events and photos from recent meetings.

# Rochester Chapter Committee Chairs Updates Research Promotion



## Research Promotion Report – Back to School

ASHRAE Research  
With you from grade school to grad school

1267-RP	Development of an ASHRAE Design Manual for District Heating and Cooling Systems
1447-RP	Performance of Pressurized Stairwells with Open Doors
1478-RP	Measuring Air-tightness of Mid- and High-rise Non-residential Buildings
1504-RP	Extension of the Clothing Insulation Database for Standard 55 and ISO 7730 to Provide data for Non-Western Clothing Ensembles, including data on the Effect of Posture and Air Movement on that Insulation
1547-RP	CO2 based Demand Controlled Ventilation for Multiple Zone HVAC Systems
1681-RP	Low Energy LED Lighting Heat Gain Distribution in Buildings
GIA 13-14	Occupants Number and Behavior can have Large Effects of Building Energy Use
GIA 15-16	Ventilated Semi-open Space for Thermal Comfort and Air Quality Control
GIA 15-16	Campus energy model calibration for metering and retrofit measure prioritization
GIA 15-16	Evaluating energy consumption and indoor environmental quality in historic buildings
GIA 15-16	Airborne virus inactiveness, phase I; using fluorescent bleaching of aerosols as a measure of exposure to oxidizing ions and radicals

For more information on these projects visit:  
<https://www.ashrae.org/researchproject>

The above shows some of the ASHRAE research projects which benefit our schools and educational facilities. This research is possible due to your support!

I look forward to seeing you at the next Rochester Chapter Meeting.

Matt Devlin, CEM, CPMP

RP Chair

# Rochester Chapter

## Committee Chairs Updates

### Membership Promotion

#### ASHRAE Rochester Chapter- Membership Promotion

I trust everyone has been enjoying this summer with abundant sunny days! Just like the parents out there are preparing for back to school, we are preparing for the beginning of our ASHRAE year. We kick off with the Clambake. This is a great event to get back in the ASHRAE schedule whether you are a regular, a new member, or trying to re-connect. If you have had positive experiences with ASHRAE, consider sharing your experiences with a colleague and encourage membership by bringing them along!

The Rochester chapter currently has 254 members of engineers, vendors and contractors. There is always room for more! To become a member or to update your profile (job, contact info, membership status), visit [www.ASHRAE.org](http://www.ASHRAE.org). If you have any questions or need assistance with any Membership Issues, please let me know.

We look forward to seeing you soon!

Thank you,

Michael Benedict



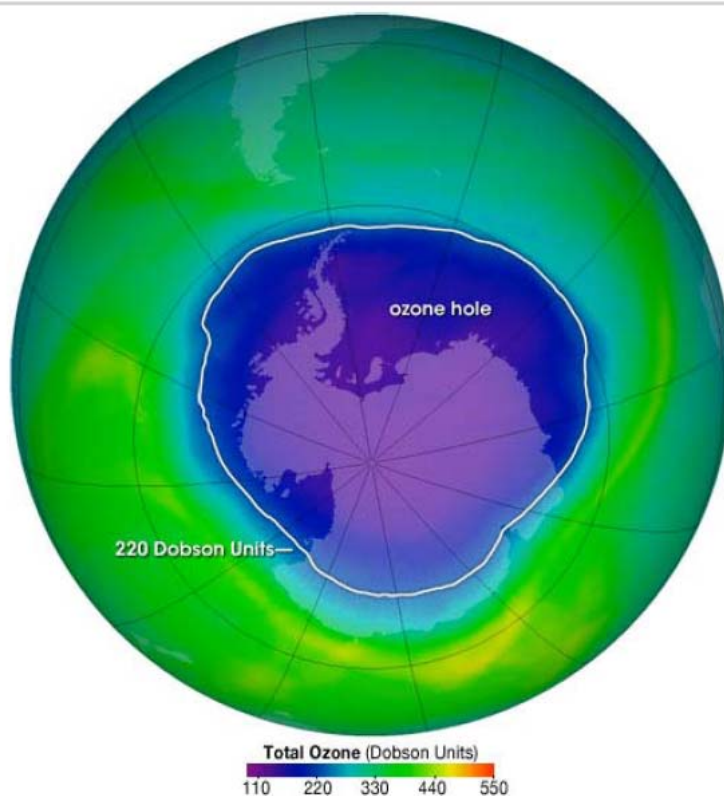
# Rochester Chapter

## Committee Chairs Updates

### Refrigeration

## Hope Shines Through Reduced Hole over the Antarctic

by Samuel Scorsone, PE, Bergmann Associates, Rochester, NY



*The ozone layer concentration over the Antarctic. The hole is shown as a lower level of ozone. Photo courtesy of Nasa.*

The July issue of *Science* reports that scientists at MIT and other institutions have recently discovered the first signs of healing in the Antarctic ozone layer. The size of the hole fluctuates throughout the year as the amount of sunlight changes, peaking in size in October. In 2015, the size of the hole in September had decreased by 1.5 million square miles or about half the area of the contiguous United States.

The Earth's ozone layer protects life from the harmful effects of the sun's ultraviolet (UV) radiation such as damaged crops and skin cancer. Ozone (O<sub>3</sub>) is a molecule made up of three oxygen atoms which is concentrated roughly 9 to 18 miles above the surface of the Earth.

# Rochester Chapter

## Committee Chairs Updates

### Refrigeration (continued)

The British Antarctic Survey (BAS) began monitoring the ozone layer in the late 1950s. However, it wasn't until 1985, that scientist discovered a decrease in the concentration of ozone in Antarctic since the mid-1970s. This reduction began to be referred to as an "ozone hole."

Susan Solomon, an atmospheric chemist at MIT and lead author of the study, began investigating the cause of the hole in the 1980s. Her investigations indicated that the leading cause of the depletion was the presence of chlorofluorocarbons, or CFCs, in the atmosphere. CFCs were once extensively used as propellants in hair sprays, coolant in refrigerators and air conditioning systems.

In the presence of sunlight, chlorine atoms (Cl) are released from the CFC molecule and when in contact with ozone ( $O_3$ ), remove one oxygen atom leaving behind  $O_2$ . When the resulting Cl-O molecules interacts with other oxygen atoms in the atmosphere, oxygen is removed from the chlorine freeing the chlorine to repeat the process. One single chlorine atom can destroy nearly a thousand ozone molecules. This process is further exacerbated when the molecules are within a polar stratospheric cloud, which are clouds formed in the polar region.

In 1987, the U.N.'s Montreal Protocol banned the use of CFCs and the substance was phased out. New refrigerant alternatives, such as R-134A, began to take its place throughout the industries.

Volcanic eruptions, such as the 2015 eruption of the Chilean volcano Calbuco, release trace amounts of chlorine and other particulates. These particulates create polar stratospheric clouds increasing the destructive rate of chlorine-ozone reactions. Solomon and her team observed that the hole over the Antarctic had reached a record high as a result of this volcanic event.

MTI news reports, "I think people, myself included, had been too focused on October, because that's when the ozone hole is enormous, in its full glory," Solomon says. "September is a better time to look because chlorine chemistry is firmly in control of the rate which the hole forms at that time of year."

When results from September 2000 to 2015 were analyzed, it was found that the size of the September hole had shrunk by 1.5 million square miles. Solomon speaking to NY Times says, "This is just the beginning of what is a long process." She and her team report that while progress will be slow, they predict the hole to significantly shrink by mid-century barring any further large-scale volcanic eruptions. These hopeful indications are evidence that measures taken to reduced harmful chemicals released into the environment are taking effect. The EPA and DOE continue to create policies to help repair human-made damage to the environment including further phase-out of refrigerants with high Global Warming Potential (GWP). These high GWP refrigerants are being swapped out and replaced with more "natural" refrigerants such as carbon dioxide ( $CO_2$ ) and propane. The Rochester ASHRAE chapter in December of this year will be presenting what the refrigeration industry can expect to see in the coming years and the potential impact of these changes to the industry.

# Board of Governors Meeting Minutes



Rochester Chapter - ASHRAE  
Board of Governors Meeting Minutes

July 11<sup>th</sup> 2016, 12:00 PM

Location: City Grill, 384 East Avenue, Rochester, NY

President / CRC Delegate	Jeff Close	X
President Elect / Program/ CRC Alternate	Bill Clark	X
Treasurer	Paul Kenna	X
Secretary	Tom Streber	X
Immediate Past President & Nominating	Chris Walter	X
Board of Gov. (3) & Attendance Chair	Tim Duprey	X
Board of Gov. (3)	Branden Farnsworth-Weinblatt	X
Board of Gov. (2) & Refrigeration Co-Chair	Sam Scorsone	X
Board of Gov. (2) & Website Chair	Steve Dear	X
Board of Gov. (1) & Membership Promotion (MP)	Mike Benedict	X
Board of Gov. (1)	George Herman	X
Historian Chair	Jake Hall	X
Newsletter Editor	Scott Edwards	X
Resource Promotion Chair (RP)	Matt Devlin	X
Awards & Recognition Chair	Al Rodgers	X
Chapter Technology Transfer Chair (CTTC)	Jeff Wiedrick	X
Education	Bill Murray	X
Publicity	Mark Kukla	X
YEA Chair (Young Engineers in ASHRAE)	Matt Kremers	
Student Activities Chair (SA)	Rob Hudson	X
Picnic/Golf Chair & CRC 2016 Committee Chair	Jim Browe	X
Buyers Guide	Marianne Schumacher	X
Valentine's Dinner Dance	Jody McGarry	
Grassroots Government Advocacy Chair	Tom Burke	
Refrigeration Co-Chair	Mike Nohle	X

# Board of Governors Meeting Minutes



Rochester Chapter - ASHRAE  
 Board of Governors Meeting Minutes  
 July 11<sup>th</sup> 2016, 12:00 PM  
 Location: City Grill, 384 East Avenue, Rochester, NY

**Roll Call:** The above noted individuals were present.

**Call to Order:** 12:07 pm

## Meeting Minutes:

1. Call to Order Jeff Close
  - Chart of Officers and Committee Chairs (CIQ)
  - Please provide updated info if necessary
  
2. Roll Call and Introductions. Tom Streber
  
3. Approval of Previous Meeting's Minutes All
  - Approved by Al Rodgers
  - Second by Mark Kukla
  
4. Treasurer's Report 2016/2017 Paul Kenna
  - \$1,000 above 2015 for meeting attendance.
  - 30% increase from Buyers Guide.
  - Jeff Close to call for cost of annual audit.
  - Year End financial summary.
  - 2016-2017 Proposed budget.
  
5. Program Report Bill Clark
  - Last year avg. 76 attendees (increase from last year, 91 highest count, All PDH approved).
  - Clam Bake cost to increase to \$30 (from \$25) to prevent net loss.
  - 2016-2017 Program update.

# Board of Governors Meeting Minutes



Rochester Chapter - ASHRAE  
 Board of Governors Meeting Minutes  
 July 11<sup>th</sup> 2016, 12:00 PM

Location: City Grill, 384 East Avenue, Rochester, NY

- |  |               |
|--|---------------|
| 6. Chapter Operations  | Jeff Close    |
| <ul style="list-style-type: none"> <li>• Manual of Chapter Operations (partial)           <ul style="list-style-type: none"> <li>i. Section 1 Officers</li> <li>ii. Section 2 Chapter Committees</li> <li>iii. Section 8 Management by Objectives (MBO).</li> </ul> </li> <li>• Rochester Chapter Manual of Procedures.</li> <li>• Rochester Chapter Bylaws and Constitution.</li> <li>• Each BOG member is asked to research how they can earn PAOE points.           <ul style="list-style-type: none"> <li>i. i.e. non-members attending monthly meetings earns PAOE points.</li> </ul> </li> </ul> |               |
| 7. Membership Promotion (MP)   | Mike Benedict |
| <ul style="list-style-type: none"> <li>• Training session in Atlanta GA for Committee Chair.</li> </ul>  |               |
| 8. Education   | Bill Murray   |
| <ul style="list-style-type: none"> <li>• No report</li> </ul>  |               |
| 9. Young Engineers in ASHRAE (YEA)   | Matt Kremers  |
| <ul style="list-style-type: none"> <li>• Promote CRC YEA Event - Thursday, 8/18 @ Genesee Brew House @ 8:30pm (FREE)</li> </ul>  |               |
| 10. Awards & Recognition   | Al Rodgers    |
| <ul style="list-style-type: none"> <li>• Realto E. Cherne award (to be presented at September clam bake)</li> <li>• CRC Awards?</li> </ul>   |               |
| 11. Resource Promotion (RP)  | Matt Devlin   |
| <ul style="list-style-type: none"> <li>• Training seminar in Chicago available.</li> <li>• 1<sup>st</sup> Annual skeet shoot           <ul style="list-style-type: none"> <li>i. 17 attendees.</li> <li>ii. Future event to be late spring/early summer</li> </ul> </li> <li>• Centralized Training ...</li> </ul>   |               |

# Board of Governors Meeting Minutes



Rochester Chapter - ASHRAE  
 Board of Governors Meeting Minutes  
 July 11<sup>th</sup> 2016, 12:00 PM

Location: City Grill, 384 East Avenue, Rochester, NY

- |   |                         |
|---|-------------------------|
| 12. Refrigeration   | Mike Nohle/Sam Scorsone |
| <ul style="list-style-type: none"> <li>• Possible topic for refrigeration meeting - Round table for refrig. regulations.</li> <li>• Joint meeting with RSES in April to be considered.</li> <li>• YEA refrigeration training session to be considered.</li> <li>• Adding a refrigeration section in newsletter to be considered.</li> </ul> |                         |
| 13. Grassroots Government Advocacy  | Tom Burke               |
| <ul style="list-style-type: none"> <li>• No report</li> </ul>   |                         |
| 14. Newsletter  | Scott Edwards           |
| <ul style="list-style-type: none"> <li>• Submissions due July 8<sup>th</sup> for August. Check manual for remaining dates.</li> </ul>   |                         |
| 15. Buyers Guide  | Marianne Schumacher     |
| <ul style="list-style-type: none"> <li>• No report</li> </ul>   |                         |
| 16. Historian   | Jake Hall               |
| <ul style="list-style-type: none"> <li>• Lee Loomis is working on History display for CRC in August</li> </ul>  |                         |
| 17. Publicity   | Mark Kukla              |
| <ul style="list-style-type: none"> <li>• No report</li> </ul>   |                         |
| 18. Website   | Steve Dear              |
| <ul style="list-style-type: none"> <li>• No report</li> </ul>   |                         |
| 19. Nominating  | Chris Walter            |
| <ul style="list-style-type: none"> <li>• No report</li> </ul>   |                         |

# Board of Governors Meeting Minutes



Rochester Chapter - ASHRAE  
 Board of Governors Meeting Minutes  
 July 11<sup>th</sup> 2016, 12:00 PM  
 Location: City Grill, 384 East Avenue, Rochester, NY

20. CRC 2016 General Chair Jim Browe
- Planning is almost complete.
  - Presentation to CRC committee was shown to BOG.
  - Early bird registration closes on 7/15.
  - Rochester Chapter will pay for Rochester committee members to attend.
  - Event Scheduled on August 18-20, 2016.
21. Picnic/Golf Jim Browe
- \$12,000 Proceeds.
  - Greater focus on contractor attendance in 2017.
22. Old Business
- 2015-16 Audit and Audit Committee
23. New Business
- Chris Walter to present a summary report/presentation of 2015-16 at CRC.
  - MBO's are due prior to next BOG meeting.
  - Individual Chairs to identify target PAOE points prior to next BOG meeting.
  - Lynn Bellenger HOF.
    - i. Approved for HOF approval process in St. Louis.
    - ii. Chris to be informed of vote soon.
  - Please contact Al Rodgers with nominees for Realto Cherne
  - BOG members should keep personal bios updated on ASHRAE's website.
24. Presidential Awards of Excellence (PAOE)
- Review status spreadsheet
25. Next BOG meeting: 9/9/16 at Day Automaton's office. 7:30am

Adjourned 1:29 pm.



# ASHRAE Student Membership Application

## What You'll Get With Your ASHRAE Student Membership!

### What's "Cool" In ASHRAE

- ASHRAE promotes energy efficiency, savings and recovery
- ASHRAE reports on building controls, automation and integration
- ASHRAE focuses on green building issues and green technology
- ASHRAE maintains standards for indoor air quality
- ASHRAE promotes solar and other alternative energy sources
- ASHRAE offers certification programs, online learning opportunities and courses and seminars at ASHRAE Conferences

### How Can ASHRAE Help You?

- Provide access to new technology
- Offer professional development opportunities
- Create opportunities for networking
- Offer online continuing education programs and eLearning programs

### Student Member Benefits

- Access to members-only web pages
- Discounts on ASHRAE Handbooks
- Monthly ASHRAE Journal - print and digital
- HVAC&R Industry and Society Connections eNewsletters
- Complimentary ASHRAE Annual and Winter Conference registration (AHR Expo, Student Program, Technical Sessions)
- Virtual online HVAC&R resume posting, job and internship searching program

### ASHRAE Student Member Opportunities

- Society and chapter-level scholarships for both undergraduate and graduate engineering students
- Discounts for student members on select publications, go to [www.ashrae.org/bookstore](http://www.ashrae.org/bookstore) for more information
- Student Design Competition
- Networking with local ASHRAE Chapters
- Senior Undergraduate Project Grant Program
- At the student branch level, you'll enjoy meeting other students with similar interests - if your school hasn't yet started a student branch, take charge and contact a faculty member and ask for help on getting started!

You can continue your student membership after college with the ASHRAE SmartStart Program. After you graduate, you pay \$20 for the first year, \$50 for the second and the third years before advancing to regular member dues!

**Join ASHRAE students on Facebook  
Visit [www.ashrae.org/students](http://www.ashrae.org/students) to join!**





**ASHRAE**  
STUDENT MEMBERSHIP APPLICATION

AMERICAN SOCIETY OF HEATING, REFRIGERATING AND AIR-CONDITIONING ENGINEERS, INC.  
ASHRAE • 1791 TULLIE CIRCLE NE • ATLANTA, GA 30329-2305 • FAX: 678-539-2212

FIRST NAME:

LAST NAME:

DATE OF BIRTH (mm/dd/yyyy)

Current Mailing Address: (this will be where all correspondence will be sent unless otherwise specified)

Street Address: \_\_\_\_\_ Apt. # \_\_\_\_\_ City: \_\_\_\_\_  
State/Province: \_\_\_\_\_ Postal Code: \_\_\_\_\_ Country: \_\_\_\_\_  
Email: \_\_\_\_\_ Alternate email: \_\_\_\_\_ Phone: \_\_\_\_\_

Permanent Mailing Address: (during the Summer Months and after graduation)

Check if Current Address is the same as Permanent Address

Street Address: \_\_\_\_\_ Apt. # \_\_\_\_\_ City: \_\_\_\_\_  
State/Province: \_\_\_\_\_ Postal Code: \_\_\_\_\_ Country: \_\_\_\_\_  
Email: \_\_\_\_\_ Alternate email: \_\_\_\_\_ Phone: \_\_\_\_\_

ASHRAE protects contact information provided by its members and customers. To view ASHRAE's privacy policy visit [www.ashrae.org/privacy-policy](http://www.ashrae.org/privacy-policy).

All student applicants must have the name and member number of an ASHRAE member serving as their student sponsor. If your Student Branch Advisor is an active Associate or Full member, he/she can serve as your sponsor. If you need assistance locating a sponsor, please email [students@ashrae.org](mailto:students@ashrae.org) or call 678-539-1212. Also, you must list the name, phone and email address of your faculty advisor or course instructor.

Sponsor Name: \_\_\_\_\_ ASHRAE Member #: \_\_\_\_\_  
Advisor/Instructor: \_\_\_\_\_ Phone: \_\_\_\_\_  
Email: \_\_\_\_\_

To receive your subscription to the ASHRAE Journal, please answer the following questions by entering the appropriate codes in the spaces provided.

Which best describes your firm? \_\_\_\_\_

- 11. Consulting Engineering
- 12. Architect/Architectural & Eng Services
- 15. Design/Build
- 21. Contractor
- 26. Property Mgmt & Dev
- 31. Industrial Facility
- 41. Commercial Facility
- 42. Government, Healthcare, Education
- 43. Utility
- 51. Manufacturer/HVAC&R Equipment
- 61. Manufacturer's Representative
- 62. Sales Engineering
- 71. Wholesaler or Distributor
- 83. Library
- 84. Technical, Professional or Trade Association
- 86. Student \*\*\*
- 91. Other (Please Specify) \_\_\_\_\_

Which best describes your title? \_\_\_\_\_

- B. President
- C. Partner
- D. Associate
- E. Owner
- F. Vice President
- G. Vice President Eng, Chief Engineer
- K. Design Engineer
- L. Project/Application Engineer
- O. Facility Engineer/Manager
- P. Research/Development Engineer
- R. Sales Engineer, Sales
- S. Purchasing Agent
- T. Draftsperson
- U. Estimator
- W. Technician
- X. Instructor, Professor
- Y. Student \*\*\*
- Z. Librarian
- ZZ. Other (Please Specify)

ASHRAE Society Dues include \$6.00 for ASHRAE Journal. This amount is not deductible from Membership dues.

I would like to participate in the activities of the \_\_\_\_\_ ASHRAE Chapter.

School Name: \_\_\_\_\_

Street Address: \_\_\_\_\_ City \_\_\_\_\_ State: \_\_\_\_\_

Country: \_\_\_\_\_ Postal Code \_\_\_\_\_

Expected Graduation Date: \_\_\_\_\_

Full time:  Part time:  Degree: \_\_\_\_\_

\*Classification: Freshman  Sophomore  Junior  Senior  Masters/PhD.

ASHRAE Student Membership \$20.00 USD

ASHRAE Handbook - Fundamentals  IP  SI

(you will receive the most current edition of Fundamentals)

More than 900 pages of HVAC&R technical information and it includes the CD! (List Price \$195)

Student Member Price: \$49.00 USD \$ \_\_\_\_\_ USD

Total \$ \_\_\_\_\_ USD

\*Additional books are available at [ashrae.org/studentbookstore](http://ashrae.org/studentbookstore)

\*Please allow up to 30 days to receive new member packets. For U.S. book orders, allow 3-5 business days from processing. For international locations and Canada, allow 7-10 business days from processing.

\*\*Please complete the ENTIRE application to ensure accuracy. Incomplete applications will NOT be processed.\*\*

Method of payment:  VISA / Master Card  American Express  Diner's Club  Check or money order enclosed\*

Card Number: \_\_\_\_\_ Expiration Date \_\_\_\_\_ CW No. \_\_\_\_\_ Amount: \_\_\_\_\_

Signature: \_\_\_\_\_ Date: \_\_\_\_\_

Print Name (as it appears on card): \_\_\_\_\_

\*Checks will be accepted in U.S and Canadian funds. Credit Card payments will be accepted in U.S. funds only.

# Region I Officers



REGION I COMMITTEE CHAIR CONTACT INFORMATION

Position	First	Last	Company	Address Line	City	State	Post Code	Phone	Email
Region Director and Regional Chair	William	Walter	Carrier Corporation	6304 Thompson Rd	Syracuse	NY	13221	(315)432-6267	<a href="mailto:r01drc@ashrae.net">r01drc@ashrae.net</a>
Region Assistant Regional Chair	Joseph	Furman	Automated Logic	16 Country Way	Wallingford	CT	06492-5356	(203)678-2208	<a href="mailto:r01arc@ashrae.net">r01arc@ashrae.net</a>
Region Members Council Rep	Joseph	Furman	Automated Logic	16 Country Way	Wallingford	CT	06492-5356	(203)678-2208	<a href="mailto:r01RMCR@ashrae.net">r01RMCR@ashrae.net</a>
Region Treasurer	Darcy	Carbone	Stebbins-Duffy, Inc.	6 Damon Rd	Medford	MA	02155-2903	(617)957-2567	<a href="mailto:r01tr@ashrae.net">r01tr@ashrae.net</a>
Region Grassroots Government Advocacy	Richard	Vehlow	NYS OGS Design	10 Catherine Pl	Latham	NY	12110-5204	(518)474-2471	<a href="mailto:r01GGAC@ashrae.net">r01GGAC@ashrae.net</a>
Region Chapter Technology Transfer	Christopher	Phelan	Thermco	228 Scales Ave	Clifton	NJ	07012-1126	(973)777-6700	<a href="mailto:r01rvcttc@ashrae.net">r01rvcttc@ashrae.net</a>
Region Membership Promotion	Lee	Feigenbaum						(347)533-0161	<a href="mailto:r01rvcm@ashrae.net">r01rvcm@ashrae.net</a>
Region Research Promotion	Andrew	Manos	Stony Brook University	17 Horton St	West Islip	NY	11795-1039	(516)413-0214	<a href="mailto:r01rvcrp@ashrae.net">r01rvcrp@ashrae.net</a>
Region Student Activities	Steven	Sill	New York State Office of People with Developmental Disabilities	2930 State Route 104A	Sterling	NY	13156-4253	(718)494-5133	<a href="mailto:r01rvcsa@ashrae.net">r01rvcsa@ashrae.net</a>
Region Regional Historian	Stanley	Westhoff	Unilux Advanced Manufacturing LLC	18 Santee Dr	Gansevoort	NY	12831-1322	(518)587-1949	<a href="mailto:r01hist@ashrae.net">r01hist@ashrae.net</a>
Region YEA	Chonghui	Liu				NY		(315)956-6533	<a href="mailto:r01yea@ashrae.net">r01yea@ashrae.net</a>
Region Nominating Committee Member	Russell	Stuber	U & S Services Inc	95 Stark St	Tonawanda	NY	14150-1210	(716)693-4490	<a href="mailto:r01nom@ashrae.net">r01nom@ashrae.net</a>
Region Nominating Committee Alternate	Darcy	Carbone	Stebbins-Duffy, Inc.	6 Damon Rd	Medford	MA	02155-2903	(617)957-2567	<a href="mailto:r01noma@ashrae.net">r01noma@ashrae.net</a>
Region CRC General Chair	Jim	Browe						(585)697-0836	<a href="mailto:R01CRCChair@ashrae.net">R01CRCChair@ashrae.net</a>
Region Representative	Spencer	Morasch	First Energy Corporation					(201)825-7321	<a href="mailto:R01RR@ashrae.net">R01RR@ashrae.net</a>
Region Electronic Communications	Stacie	Suh	Stebbins-Duffy, Inc.	10 Technology Drive	Peabody	MA	01960	(781)258-1002	<a href="mailto:r01ECC@ashrae.net">r01ECC@ashrae.net</a>
Region Webmaster	Stacie	Suh	Stebbins-Duffy, Inc.	10 Technology Drive	Peabody	MA	01960	(781)258-1002	<a href="mailto:r01ECC@ashrae.net">r01ECC@ashrae.net</a>
Region Refrigeration	Charles	Bertusch	Bergmann Associates	224 Harrison Street	Syracuse	NY	13202	(315)415-5364	<a href="mailto:r01ref@ashrae.net">r01ref@ashrae.net</a>
Regional Program RVC	Peter	Oppelt	RF Peck	889 Atlantic Ave	Rochester	NY	14609	(585)697-0836	<a href="mailto:R01prg@ashrae.net">R01prg@ashrae.net</a>

Email Address : [r01drc@ashrae.net](mailto:r01drc@ashrae.net); [r01arc@ashrae.net](mailto:r01arc@ashrae.net); [r01drc@ashrae.net](mailto:r01drc@ashrae.net); [r01ecc@ashrae.net](mailto:r01ecc@ashrae.net); [r01rvcttc@ashrae.net](mailto:r01rvcttc@ashrae.net); [r01rvcm@ashrae.net](mailto:r01rvcm@ashrae.net); [r01rvcrp@ashrae.net](mailto:r01rvcrp@ashrae.net); [r01rvcsa@ashrae.net](mailto:r01rvcsa@ashrae.net); [r01ref@ashrae.net](mailto:r01ref@ashrae.net); [r01yea@ashrae.net](mailto:r01yea@ashrae.net); [r01tr@ashrae.net](mailto:r01tr@ashrae.net); [r01nom@ashrae.net](mailto:r01nom@ashrae.net); [r01noma@ashrae.net](mailto:r01noma@ashrae.net); [r01RMCR@ashrae.net](mailto:r01RMCR@ashrae.net); [r01hist@ashrae.net](mailto:r01hist@ashrae.net); [R01ref@ashrae.net](mailto:R01ref@ashrae.net); [R01prg@ashrae.net](mailto:R01prg@ashrae.net); [r01GGAC@ashrae.net](mailto:r01GGAC@ashrae.net); [R01CRCChair@ashrae.net](mailto:R01CRCChair@ashrae.net); [R01RR@ashrae.net](mailto:R01RR@ashrae.net)



## REGION I CHAPTER PRESIDENT CONTACT INFORMATION

Chapter #	Chapter Name	First	Last	Company	Address Line1	City State Zip	Phone	Email Address
001	BOSTON	William	Tang	BR+A Consulting Engineers	170 Clocktower Dr Unit 304	Waltham, MA 02452-7878	(617)925-8288	<a href="mailto:c001@ashrae.net">c001@ashrae.net</a>
003	RHODE ISLAND	Paul	Reddington	Victaulic Company	26 Prairie Ct	Manchester, NH 03102-4964	(508)878-9159	<a href="mailto:c003@ashrae.net">c003@ashrae.net</a>
004	CONNECTICUT	Brandon	Bradley	ABCO HVACR Supply + Solutions	515 Old Tolland Tpke	Coventry, CT 06238-1857	(203)325-9000	<a href="mailto:c004@ashrae.net">c004@ashrae.net</a>
006	LONG ISLAND	Donald	Kane	Nassau Suffolk Engineering &Architecture	45 Swallow Ln	Brentwood, NY 11717-1344	(631)737-9170	<a href="mailto:c006@ashrae.net">c006@ashrae.net</a>
007	NEW JERSEY	Dorrie	Mercurio		75 South St	Freehold, NJ 07728-2317	(732)761-0108	<a href="mailto:c006@ashrae.net">c006@ashrae.net</a>
008	NEW YORK	Jose	Rodriguez	Wallace Eannace Associates	779 Susquehanna Ave	Franklin Lakes, NJ 07417-1321		<a href="mailto:c008@ashrae.net">c008@ashrae.net</a>
009	NORTHEAST	David	Houle	EME Consulting Engineering Group	292 Washington Avenue Ext Ste 109	Albany, NY 12203-6385	(518)862-0882	<a href="mailto:c009@ashrae.net">c009@ashrae.net</a>
010	CENTRAL NEW YORK	Mark	Yonnick	FW Webb Co	6792 Townline Rd	Syracuse, NY 13211-1911	(315)476-9322	<a href="mailto:c010@ashrae.net">c010@ashrae.net</a>
011	ROCHESTER	Jeffrey	Close	PRES Energy Engineering	3777 Dewey Rd	Shortsville, NY 14548-9725	(585)289-6816	<a href="mailto:c011@ashrae.net">c011@ashrae.net</a>
012	NIAGARA FRONTIER	Becca	Hojnacki	ECON Technologies	2640 Walden Ave	Buffalo, NY 14225-4736	716-693-4490	<a href="mailto:c012@ashrae.net">c012@ashrae.net</a>
111	CHAMPLAIN VALLEY	Blaine	Conner	Vermont Mechanical Inc.	1 School St Apt 6	Montpelier, VT 05602-2912	(802)343-8644	<a href="mailto:C111@ashrae.net">C111@ashrae.net</a>
118	MAINE	Rachel	Riley	Sweeney Rogers Geraghty Incorporated	215 E Grand Ave Apt 305	Old Orchard Beach, ME 04064-3028	(207)460-0076	<a href="mailto:C118@ashrae.net">C118@ashrae.net</a>
129	TWIN TIERS	Travis	Fisher	Cornell University	51A Goodrich Rd	Owego, NY 13827-1552	(607)255-5608	<a href="mailto:C129@ashrae.net">C129@ashrae.net</a>
146	BI-STATE	Brendan	Smith		33 Beach Rd	Ossining, NY 10562-3201	(914)741-1290	<a href="mailto:C146@ashrae.net">C146@ashrae.net</a>
152	GRANITE STATE	Paul	Bemis	Applied Math Modeling Inc	75 S Main St Unit 7 PMB 144	Concord, NH 03301-4865	(603)369-6085	<a href="mailto:C152@ashrae.net">C152@ashrae.net</a>

Email Address: [c001@ashrae.net](mailto:c001@ashrae.net); [c003@ashrae.net](mailto:c003@ashrae.net); [c004@ashrae.net](mailto:c004@ashrae.net); [c006@ashrae.net](mailto:c006@ashrae.net); [c007@ashrae.net](mailto:c007@ashrae.net); [c008@ashrae.net](mailto:c008@ashrae.net); [c010@ashrae.net](mailto:c010@ashrae.net); [c011@ashrae.net](mailto:c011@ashrae.net); [c012@ashrae.net](mailto:c012@ashrae.net); [c111@ashrae.net](mailto:c111@ashrae.net); [c118@ashrae.net](mailto:c118@ashrae.net); [c129@ashrae.net](mailto:c129@ashrae.net); [c146@ashrae.net](mailto:c146@ashrae.net); [c152@ashrae.net](mailto:c152@ashrae.net)



## REGION I CHAPTER NEWSLETTER CONTACT INFORMATION

Chapter #	Chapter Name	First	Last	Company	Address Line1	City State Zip	Phone	Email Address
001	BOSTON	Deanna	Adkison	AKF Group	197 Lothrop St	Beverly, MA 01915-3763	(617)535-8236	<a href="mailto:c001ne@ashrae.net">c001ne@ashrae.net</a>
004	CONNECTICUT	Nichole	Petersen	Flow Tech Inc	10 Bidwell Rd	South Windsor, CT 06074-2412	(860)291-8886	<a href="mailto:c004ne@ashrae.net">c004ne@ashrae.net</a>
006	LONG ISLAND	Liset	Cordero	MG Engineering DPC	170 Horton Ave	Valley Stream, NY 11581-1439	(212)643-9055	<a href="mailto:c006ne@ashrae.net">c006ne@ashrae.net</a>
007	NEW JERSEY	Adele	Glaser	Trane	19 Chapin Rd Bldg B Suite 200	Pine Brook, NJ 07058-9385	(973)244-7731	<a href="mailto:c006ne@ashrae.net">c006ne@ashrae.net</a>
011	ROCHESTER	Scott	Edwards	Johnson Controls	31 Barkwood Ln	Spencerport, NY 14559-2249	(585)301-6591	<a href="mailto:c011ne@ashrae.net">c011ne@ashrae.net</a>
012	NIAGARA FRONTIER	Varun	Kulkarni	Zehnder Rittling	100 Rittling Blvd	Buffalo, NY 14220-1885	(405)385-1928	<a href="mailto:c012ne@ashrae.net">c012ne@ashrae.net</a>
129	TWIN TIERS	Andrew	Nice	Meier Supply Co.	275 Broome Corporate Pkwy	Conklin, NY 13748-1511	(607)797-7700	<a href="mailto:C129ne@ashrae.net">C129ne@ashrae.net</a>

### Email Address:

c001ne@ashrae.net; c003ne@ashrae.net; c004ne@ashrae.net; C006ne@ashrae.net; c007ne@ashrae.net; c008ne@ashrae.net; c010ne@ashrae.net; c011ne@ashrae.net; c012ne@ashrae.net; c111ne@ashrae.net; c118ne@ashrae.net; c129ne@ashrae.net; c146ne@ashrae.net; [c152ne@ashrae.net](mailto:c152ne@ashrae.net)



## REGION I CHAPTER WEBMASTER CONTACT INFORMATION

Chapter #	Chapter Name	First	Last	Company	Address Line1	City State Zip	Phone	Email Address
001	BOSTON	Kevin	Doty	Victaulic	12 Mohawk St Unit 9	Boston, MA 02127-3594	(484)523-8908	<a href="mailto:c001web@ashrae.net">c001web@ashrae.net</a>
007	NEW JERSEY	Dorrie	Mercurio		75 South St	Freehold, NJ 07728-2317	(732)761-0108	<a href="mailto:c006web@ashrae.net">c006web@ashrae.net</a>
008	NEW YORK	Gaspar	Cabrera	YR&G	163 W 23rd St	New York, NY 10011-2465	(917)783-0166 (917)7830166	<a href="mailto:c008web@ashrae.net">c008web@ashrae.net</a>
011	ROCHESTER	Stephen	Dear	Crosby Brownlie Inc	100 Nassau St	Rochester, NY 14605-1955	(585)730-2599	<a href="mailto:c011web@ashrae.net">c011web@ashrae.net</a>
012	NIAGARA FRONTIER	James	Price		1021 Klein Rd	Williamsville, NY 14221-1923	(716)645-5516	<a href="mailto:c012web@ashrae.net">c012web@ashrae.net</a>
118	MAINE	Stephan	Becker	SMRT	144 Fore St	Portland, ME 04101-4843	(207)772-3846	<a href="mailto:C118web@ashrae.net">C118web@ashrae.net</a>
129	TWIN TIERS	Michael	Colwell	Tri Cities Temperature Ctl Inc	122 Park Ave	Binghamton, NY 13903-3227	(607)724-8282	<a href="mailto:C129web@ashrae.net">C129web@ashrae.net</a>

### Email Address:

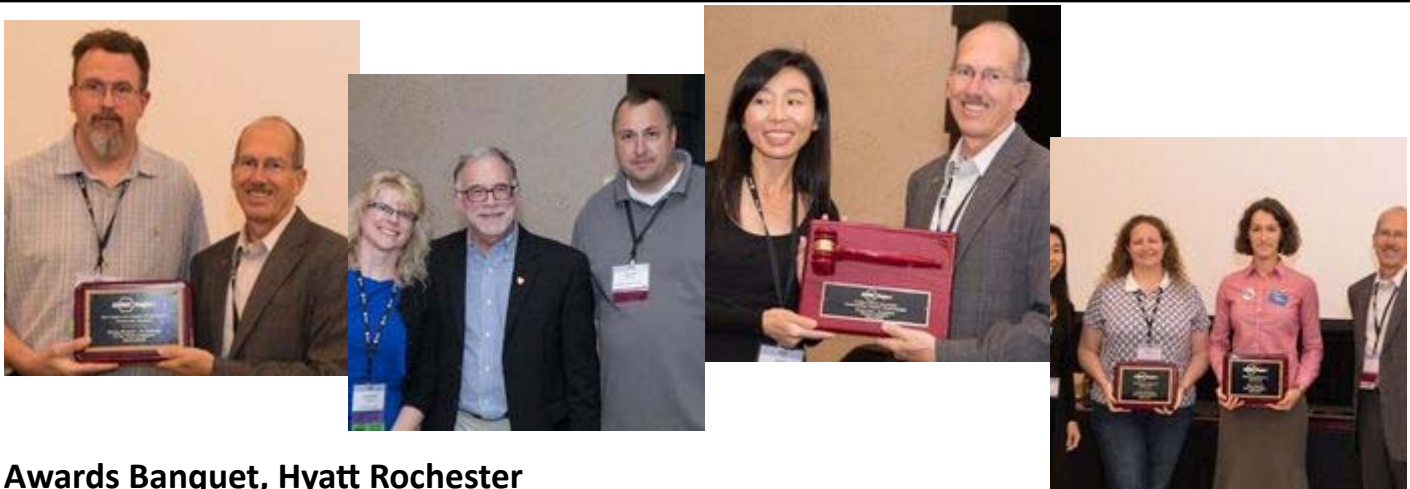
c001web@ashrae.net; c003web@ashrae.net; c004web@ashrae.net; C006web@ashrae.net; c007web@ashrae.net; c008web@ashrae.net; c010web@ashrae.net; c011web@ashrae.net; c012web@ashrae.net; c111web@ashrae.net; c118web@ashrae.net; c129web@ashrae.net; c146web@ashrae.net; [c152web@ashrae.net](mailto:c152web@ashrae.net)

# Region I CRC Photos

## Welcome Dinner, The Penthouse at One East Ave



## Business Meeting, Hyatt Rochester



## Awards Banquet, Hyatt Rochester

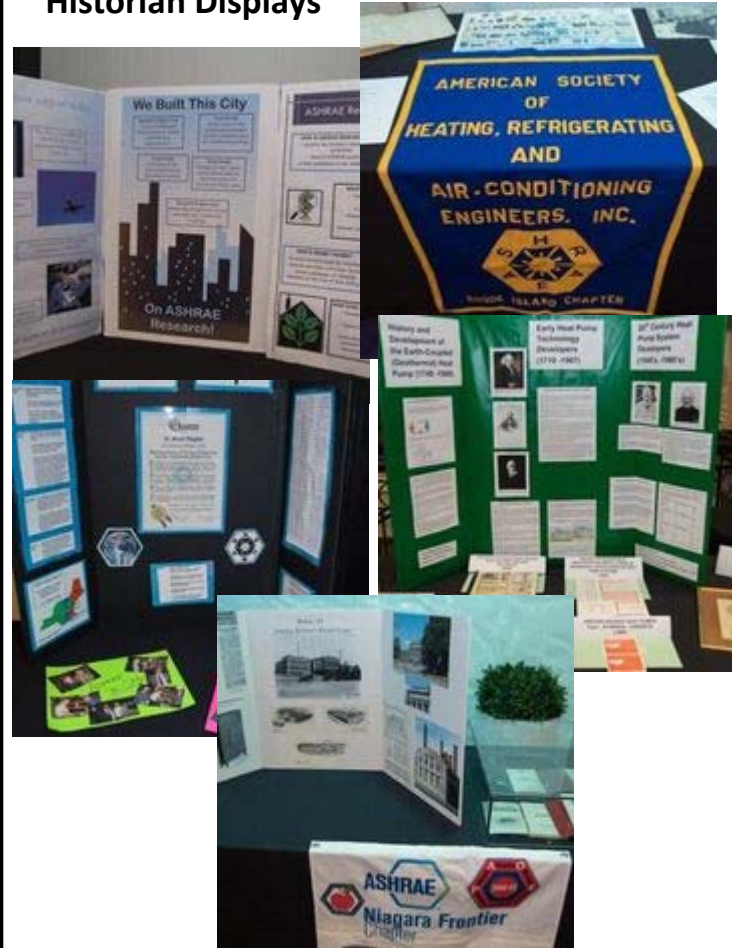
### President's Speech



### Presidential Dinner Highlights



### Historian Displays



### Recognition Breakfast

# Get Your Company into the 2016 Buyers Guide Today!

What are the benefits to being in the ASHRAE Buyers Guide??

- **Publication of your business and services**
- **Attract new customers**
- **Generate visibility and awareness at ASHRAE participating events inside and outside of the industry**
- **Strengthen communications between, manufacturers, sales representatives, engineers who specify products and contractors who purchase / install those products**





## Rochester Chapter

### Article Details

- Not only limited to ASHRAE associated members
- Cost is \$125.00
- Checks accepted made out to ASHRAE Rochester Chapter or pay on website via PayPal
- May be color or B&W
- Size should be 8 ½ x 11 PDF format
- Updated on an annual basis

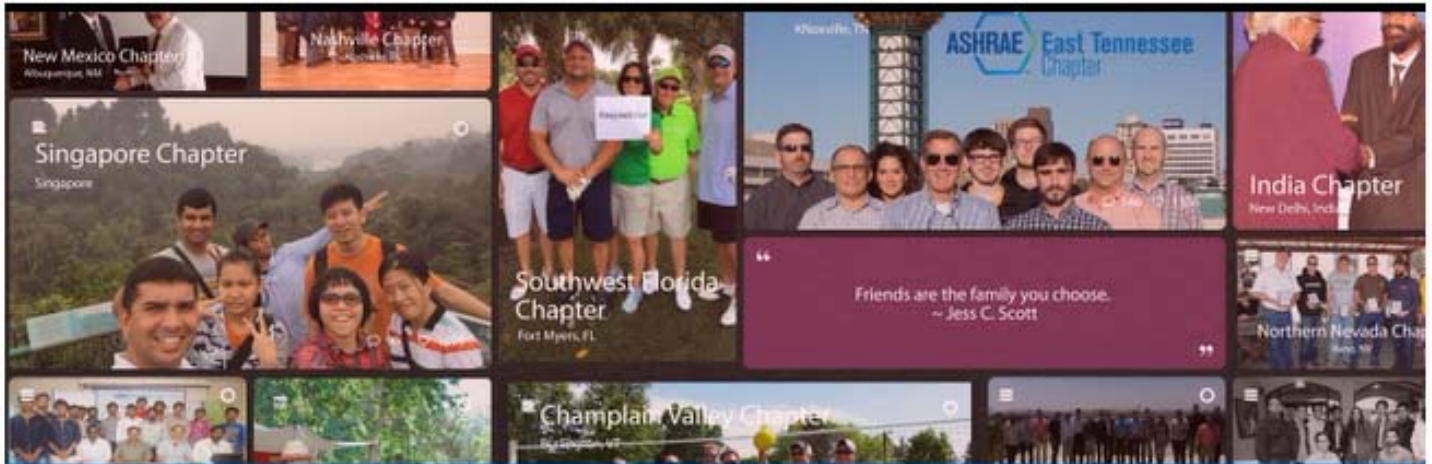
Visit the Rochester ASHRAE website to check out more or pay by PayPal!

Have Questions??

Contact: Marianne Schumacher  
585-217-3942



Shaping Tomorrow's  
Built Environment Today



## Keynotes Newsletter

Daniel Gurley, Manager of Membership

Contact: DGurley@ashrae.org or 678-539-1127

# Member Spotlight

**Nate Boyd, P.E., CPMP, LEED AP**  
Mechanical Engineer/Energy Specialist  
Central Florida Chapter Governor



Since joining ASHRAE as a student in 2007, Nate has gained a diverse network of peers and experience from his participation in committees such as Grassroots Government Advocacy Committee, Building EQ, and Impact of ASHRAE's Standards and Technology on Energy Savings Committee. "I've made countless connections through ASHRAE that have developed into true friendships outside of ASHRAE, and has been the single largest driver in my professional success," Boyd said.

Refer an ASHRAE member from your chapter or region for a chance to be the next featured member. Please [email](#) your referrals to the Marketing Assistant, Lauren Montgomery.



## 2016 ASHRAE Annual Conference St. Louis Recap Video



<https://www.youtube.com/watch?v=VCOc0Y1gP2c>

In 1904, at the World's Fair held in St. Louis, Missouri, the general population was introduced for the first time to the comfort of air conditioning. One hundred and twelve years later, ASHRAE took its Annual Conference to the city to discuss the latest in built environment technology. Find out what makes an ASHRAE conference unique with our [St. Louis recap video!](#)

---

## Membership Promotion Training in Atlanta

September 10, 2016 at 8am - 4pm



Register for Membership Promotion Training by Sept. 2, 2016. Regions I - XII training will be held at ASHRAE headquarters located at 1791 Tullie Circle NE, Atlanta, GA 30329. **Region at Large and Region XIII will have a separate training held in Bangkok during their joint CRC.** Please contact Daniel Gurley with any questions at [DGurley@ashrae.org](mailto:DGurley@ashrae.org) or 678-539-1127.

### Sign Up!

1. **REGISTER** for training NOW (or by September 2, 2016).
2. **Book your hotel** at the Courtyard by Marriott, 1236 Executive Park Drive, Atlanta, Georgia 30329
3. Arrange your transportation in accordance with **ASHRAE's Transportation Policy**. If you wish to book direct through AMEX, call 1-800-872-9954 and mention ASHRAE and Membership Promotion

### Costs Associated with Attending:

- There is no fee to register for Centralized Training itself. Training will include lunch the day of training as well as snacks and drinks during the day.
- ASHRAE covers your flight or mileage, whichever is more affordable, based on the **ASHRAE Transportation Policy**
- Your hotel, any additional ground transportation expenses (e.g. taxi, shuttle, etc.) and food cannot be covered by ASHRAE. We recommend MP Chairs dialog directly with their chapter president on what the chapter can cover

**PS:** Have you seen the **MP Training Page**? It's amazing.

<http://mptraining.weebly.com/>

---

## Nominations Due For Next Society Year

Please take the opportunity to contribute nominations for Officers and Directors for the Board of Directors Society Year 2017-2018. Nominations for Treasurer, Vice Presidents and Directors-at-large come from the Chapter Regional Conferences *but we encourage individuals to make nominations.*

[Login to ashrae.org](#) to nominate someone today.

---

## Don't be Left Out of the Next Chapter Video!

Please submit images of your chapter for inclusion in the next chapter video to [marketing@ashrae.org](mailto:marketing@ashrae.org). The ASHRAE's chapter video is posted to the website, Youtube, and shown at the Plenary Session during the Winter Conference and AHR Expo. [Check out the video from last year.](#)

<https://www.youtube.com/watch?v=XJi4E45rpAU>

---

## Fall 2016 YEA Leadership Weekend November 4-6, 2016 in Charlotte, North Carolina



[Register](#) for the Fall 2016 YEA Leadership on November 4-6, 2016 in Charlotte, NC. Attendance is capped at 30 attendees and registration is \$400. Encourage your YEA Chapter Chair or active Chapter YEA members to attend! Learn more and register at [www.ashrae.org/YLW](http://www.ashrae.org/YLW).

## 2017 Student Design Competition

### Registration Now Open



The [2017 Student Design Competition](#) focuses on a new single-story with mezzanine office and repair building in the Diego Ramirez Islands. Each team must register online in order to participate. The first deadline for the 2017 competition is May 4th, 2017. ASHRAE will recognize the outstanding student design projects at the 2018 ASHRAE Winter Meeting to be held in Chicago, IL, January 20-January 24, 2018. For more information [contact](#) the Assistant Manager of Student Activities, Katie Thomson.

## Utilize Reach Resources for Employer Visits



As your chapter's year starts to ramp up, please utilize the [ASHRAE Reach Employer Support Program](#) to help you make your employer site visits more impactful. Check out the program's [resource page](#) to find tips and tricks on how to make the most of these visits. And, don't forget, the PAOE points have been boosted in this category—it's an easy win-win.

## Nominations Open for Grassroots Government Advocacy Award

**Submissions due by Sept. 30**



Do you know an ASHRAE Champion? Annually, the Grassroots Government Advocacy Award recognizes an ASHRAE member or team of members who demonstrates outstanding efforts in the national, State, Provincial and/or local government on technical issues important to ASHRAE. Visit our website to nominate an ASHRAE member or team today. To submit your nomination, [download](#) the application and [email](#) it to Jim Scarborough. [Learn more.](#)

## ASHRAE Learning Institute

### 2016 Fall Online Courses:

- \$284 non-member / \$219 member  
(Two-part courses: \$484 non-member / \$359 member)
- Register by September 16th and Save!
- Earn 3-6 PDHs

To see course listing and to register, go to: <https://www.ashrae.org/education--certification/2016-fall-online-courses>

## "Value of Certification" Survey

Record 500 Applications Received!



In SY 2015-16 ASHRAE achieved a high-water mark of over 500 certification applications received! That's a tremendous number, so what is it exactly that's driving built-environment professionals to pursue an ASHRAE certification? In a recent "Value of Certification" survey, this is what respondents had to say:

- I'm proud to hold my ASHRAE certification (94%),
- ASHRAE certification validates my level of specialized knowledge and ability (89%),
- ASHRAE Certification is a good barometer of how serious someone is about their career (83%)
- ASHRAE certification helps differentiate me from my peers (82%),
- Studying for the ASHRAE Certification Exam enhanced the breadth and depth of my knowledge and ability (77%),
- In my field, ASHRAE Certification has provided me with greater professional recognition (73%).

# ASHRAE's HVAC Design Training



## HVAC Design: Level I—Essentials

ASHRAE's *HVAC Design: Level I—Essentials* provides intensive, practical training for HVAC designers and others involved in the delivery of HVAC services. In three days, gain practical skills and knowledge in designing and maintaining HVAC systems that can be put to immediate use.

- Fundamentals
- Heating/Cooling Load Calculation
- System Selections
- HVAC System and Components
- Cooling System
- Basic Design of Hydronic Systems
- Basic Design of Air Systems
- Control/BAS

### HVAC Design: Level I—Essentials

**When:** October 3-5, 2016 | Baltimore, MD

**Cost:** \$1,264 (ASHRAE Member: \$1,009)

**Company Discount:** Enroll 3 or more participants from the same company at the same time and SAVE!

REGISTER at <https://xp20.ashrae.org/secure/ali/hvac2016/?number=17>



## BONUS!

Get a FREE copy  
of *Standard  
189.1-2014* and  
*User's Manual.*

**A \$200 Value!**



Register for BOTH training sessions to save money and fast track your experience level!

# ASHRAE's HVAC Design Training



## HVAC Design: Level II—Applications

ASHRAE's *HVAC Design: Level II — Applications* provides instruction on HVAC system designs for experienced HVAC designers and those who complete the HVAC Design: Level I — Essentials training. In two days, gain an in-depth look into *Standards 55, 62.1, 90.1, 189.1* and the *Advanced Energy Design Guides*. Training will focus on a range of topics including: HVAC equipment and systems, energy modeling, designing a chiller plant, and BAS controls.

- Sustainability / Green/LEED / HPB / NZEB
- Standard 55
- Standard 62.1
- Building Systems: Education Facility
- System Applications: Chiller/Boiler, Air Handlers, VAV Terminals
- Life Cycle Cost
- Building Systems: Multi-story Office Building
- Water-to-Water GSHP Option 1 Chilled Beam with DOAS
- Water-to-Water GSHP Option 2 UFAD

### HVAC Design: Level II—Applications

**When:** October 6-7, 2016 | Baltimore, MD  
**Cost:** \$854 (ASHRAE Member: \$699)

**Company Discount:** Enroll 3 or more participants from the same company at the same time and SAVE!

REGISTER at <https://xp20.ashrae.org/secure/ali/hvac2016/?number=17>



### BONUS!

Get a FREE copy of *ASHRAE GreenGuide: Design, Construction, and Operation of Sustainable Buildings, 4th. ed.*

A \$100 Value!

## YOUR INSTRUCTORS



Joel Primeau, P.Eng., Member ASHRAE, HBDP, LEED® AP

View bio:  
<https://www.ashrae.org/education--certification/hvac-design-and-operation-training/baltimore-hvac-design-training-october-2016#instructors>



Dennis Wessel, P.E., Fellow/Life Member ASHRAE, LEED® AP

View bio:  
<https://www.ashrae.org/education--certification/hvac-design-and-operation-training/baltimore-hvac-design-training-october-2016#instructors>

Like us on Facebook | Follow us on Twitter | Join the conversation on ASHRAEXCHANGE



# News

1791 Tullie Cir. NE | Atlanta, Ga. 30329-2305 | 404-636-8400 | [www.ashrae.org](http://www.ashrae.org)

For Release:  
 Aug. 5, 2016  
 Contact: Jodi Scott  
 Public Relations  
 678-539-1140  
[jscott@ashrae.org](mailto:jscott@ashrae.org)

## Proposed ASHRAE/ACCA Standard for Energy Audits Open for Public Comment

ATLANTA – A proposed joint standard from ASHRAE and ACCA establishes consistent practices for conducting and reporting energy audits is open for a 45-day American National Standards Institute (ANSI) public review.

ASHRAE/ACCA Standard 211P, *Standard for Commercial Building Energy Audits*, is open for public comment from Aug. 5 until Sept. 19, 2016. To comment or learn more, visit [www.ashrae.org/publicreviews](http://www.ashrae.org/publicreviews).

Standard 211P defines the procedures required to perform ASHRAE Level 1, 2 and 3 Energy Audits and provide a common scope of work for these audit levels for use by building owners and others as well as establish standardized industry practices and minimum reporting requirements for the results.

An initial Advisory Public Review (non-ANSI) of the standard that closed in December 2015 resulted in more than 600 comments from some 100 people. Changes made as a result of that review include:

- Expansion of scope to include multi-family residential buildings.
- Modification of requirements for energy auditor qualifications
- Addition of specific guidance around the energy audit quality control process
- Improvement of reporting forms for usability
- Review of reporting formats for compatibility with BuildingSync, the DOE protocol for transmitting energy audit data with XML files
- Addition of optional input guidance to for compatibility with the DOE's Asset Score rating approach for existing building assessments.
- Updated procedures guidance to be more audit customer-oriented and include measures for reasons beyond energy-savings benefits
- Refined guidance around Level 3 procedures
- Clarified actions for energy auditor vs what may be supervised
- Removal of energy efficiency measure recommendations appendix (these are found in ANSI/ASHRAE/IESNA Standard 100-2006, *Energy Conservation in Existing Buildings*)
- Addition of guidance for Building Energy Model Calibration
- Edits based on reviewer comments to make the standard more usable, clear and effective.

ASHRAE first addressed audits in 2004 with its publication *Procedures for Commercial Building Energy Audits* (1<sup>st</sup> Ed), which introduced the concept of ASHRAE Level 1, 2 and 3 Energy Audits as a shorthand for designating the depth of an energy audit. That concept is now commonly used in the commercial building sector. In 2011, a second edition, which added guidelines for best practices in energy audits, was published.

ASHRAE, founded in 1894, is a global society advancing human well-being through sustainable technology for the built environment. The Society and its more than 56,000 members worldwide focus on building systems, energy efficiency, indoor air quality, refrigeration and sustainability. Through research, standards writing, publishing, certification and continuing education, ASHRAE shapes tomorrow's built environment today. More information can be found at [www.ashrae.org/news](http://www.ashrae.org/news).



 Like us on Facebook |  Follow us on Twitter |  Join the conversation on ASHRAEExchange



# News

---

1791 Tullie Cir. NE | Atlanta, Ga. 30329-2305 | 404-636-8400 | [www.ashrae.org](http://www.ashrae.org)

For Release:  
Aug. 8, 2016  
Contact: Jodi Scott  
Public Relations  
678-539-1140  
[jscott@ashrae.org](mailto:jscott@ashrae.org)

## **ASHRAE Standard to Provide Unity in Rating Systems Open for Public Comment**

ATLANTA – Several proposed changes to a standard that will address energy performance in rating programs are open for public comment.

ASHRAE Standard 214P, *Standard for Determining and Expressing Building Energy Performance in a Rating Program*, will provide a standardized approach for determining and expressing building energy performance in a rating program and standardizes the content of a label associated with the energy component of a rating program. It also will establish minimum requirements for rating program documentation.

The proposed standard is open for public comment from Aug. 5 until Sept. 19, 2016. To learn more or to comment, visit [www.ashrae.org/publicreviews](http://www.ashrae.org/publicreviews).

There are many entities in the marketplace that rate buildings utilizing a number of different building rating systems yielding varying results, according to Wayne Stoppelmoor, chair of the Standard 214P committee. The proposed standard is meeting a need for uniformity in the building energy labeling and disclosure process.

The standard underwent a public advisory review in August, resulting in 40 comments.

One of the changes made as a result of that public review was revision of the title, purpose and scope to better reflect the actual content of the standard. The change inserted a section that restricts the standard to only apply to the energy component of a rating program. The title, purpose and scope also was revised to state that the standard is to be used with one or more energy performance metrics.

Other major changes to the proposed standard include:

- Revision to allow the rating program to define its methodology sampling rate
- Addition of two means for an assessor to demonstrate competence
- Addition of a Code of Conduct section

ASHRAE, founded in 1894, is a global society advancing human well-being through sustainable technology for the built environment. The Society and its more than 56,000 members worldwide focus on building systems, energy efficiency, indoor air quality, refrigeration and sustainability. Through research, standards writing, publishing, certification and continuing education, ASHRAE shapes tomorrow's built environment today. More information can be found at [www.ashrae.org/](http://www.ashrae.org/)

Like us on Facebook | Follow us on Twitter | Join the conversation on ASHRAEXCHANGE



# News

1791 Tullie Cir. NE | Atlanta, Ga. 30329-2305 | 404-636-8400 | [www.ashrae.org](http://www.ashrae.org)

For Release:  
 Aug. 12, 2016  
 Contact: Jodi Scott  
 Public Relations  
 678-539-1140  
[jscott@ashrae.org](mailto:jscott@ashrae.org)

## ASHRAE Names New Distinguished Lecturers

ATLANTA – ASHRAE has named nine new Distinguished Lecturers who provide Society chapters with noted authorities and speak on relevant topics that impact the built environment industry.

This marks the 17<sup>th</sup> year of the Distinguished Lecturer Program, with over 2,000 lectures given since the program began in 1996. The total 70 Lecturers for the 2016-17 Society year represent 12 countries, including Argentina, Canada, Denmark, Egypt, India, Malaysia, Mexico, Singapore, Thailand, Sri Lanka, United Kingdom and the United States. These lecturers are available to present on 395 topics and speak a combined 11 languages.

The new lecturers and their presentation topics are:

- Chandana Dalugoda, C.Eng., managing partner, Chandana Dalugoda Consultants, Piliyandala, Sri Lanka; Air Conditioning Systems for Tropical Humid Climates, Applied Psychometrics for Air Conditioning Systems, Cooling Load Calculations ASHRAE CLTD/SCL/CLF (cooling load temperature difference/cooling load factor/solar cooling load factor) Method, Reducing Carbon Footprint of Buildings in Developing Economies and Sustainable HVAC Designs for Green Buildings.
- Patricia Graef, P.E., senior engineer, Munters Corp.; Fort Myers, Fla. The Logic of Dedicated Outside Air Systems and the Core Technologies that Make Them Effective; and ANSI/ASHRAE 188-2015, *Legionellosis: Risk Management for Building Water Systems*.
- Jorge Hernandez, P.E., Regional Managers and Associates, Orlando, Fla. Basic Air Conditioning Concepts for Beginning Engineers and Architects, Basic Psychrometrics for Industrial Refrigeration Professionals, Critical Applications, Displacement Ventilation, Latest Developments in the HVAC World and Psychrometrics of Displacement Ventilation.
- Julia Keen, Ph.D., P.E., Department of Architectural Engineering, Kansas State University, Manhattan, Kan. ASHRAE Building Energy Quotient – Building Performance vs. Building Certification and Rating, Ethical Decision Making – An Exercise in Application, How to Increase Profit – Retention of Women Engineers in the Workforce, *Millennials* – How to Manage the next Generation and Tools for Success (that do not Require a Calculator).
- Thomas Phoenix, P.E., Moser Mayer Phoenix Associates, Greensboro, N.C. Improving Building Performance, Passion and Performance and the Value of ASHRAE's Building Energy Quotient.
- Richard Rooley, FEng., Project Management Partnership, Stoke Poges, United Kingdom. Sick Building Syndrome – Reality or Myth, Sublime Chaos in Construction: Each Profession and Trade as a Strange and Dominant Attractor, The People of Our Industry – The Human Seven Deadly Sins in the Use and Construction of Buildings and Worst Practice Lessons for Energy Efficiency.

**See next page for continuation**

 Like us on Facebook | 
  Follow us on Twitter | 
  Join the conversation on ASHRAEXCHANGE



# News

1791 Tullie Cir. NE | Atlanta, Ga. 30329-2305 | 404-636-8400 | [www.ashrae.org](http://www.ashrae.org)

For Release:  
 Aug. 12, 2016  
 Contact: Jodi Scott  
 Public Relations  
 678-539-1140  
[jscott@ashrae.org](mailto:jscott@ashrae.org)

## ASHRAE Names New Distinguished Lecturers

### *See previous page for continuation*

- Gregory Scrivener, Cold Dynamics, Edmonton, Alberta. Canadian Refrigeration Safety Code, CO2 Refrigeration and Heat Pumping and Refrigeration Energy Essentials.
- Rajinder Singh, Ph.D., Pusa Institute of Technology, New Delhi, India. Applied Psychrometry for Air-Conditioning Engineers, Best Practices for Operation and Preventative Maintenance of HVAC, Systems in Green Buildings, Use of Green Secondary Refrigerant (Ice Slurry) for Refrigeration and Air Conditioning, and Vapor Absorption Refrigeration System.
- Om Taneja, Ph.D., P.E., Associated Consulting Company, Kendall Park, N.J. An Approach to Improved Indoor Air Quality and Operations of Buildings: Adopt Smart Buildings Technologies and Train Operations and Maintenance Staff for Required Competencies; Analytical, Performance and Prescriptive Codes and Measure for Life Cycle Assessment of Sustainability and Energy Efficiency Projects; Analytical, Performance and Prescriptive Measure for Life Cycle Assessment of Facilities Projects; Bridging the Knowledge, Technology and Personnel Gap for High Performance Buildings from Concept through Operations; Facing the Realities and Challenges of Urbanization, Smart Cities, Smart Infrastructure and Smart Buildings for Greater Sustainability and Resilience; Framework For Structured Transformation to Future of Facilities to Foster Innovation , Operational Excellence and Resilience – Bridging The Gap in Performance from Concept Though Operations; Leveraging Innovative Technologies For Life-Cycle Operational Efficiency, Improved Indoor Air Quality And Greater Adaptability To Climatic Variations; and Operations and Maintenance Measures for Improving Performance of HVAC Systems and Chiller Plants

For a complete listing of Distinguished Lecturers and detailed procedures on how to arrange a lecturer presentation, visit [www.ashrae.org/distinguishedlecturers](http://www.ashrae.org/distinguishedlecturers).

ASHRAE, founded in 1894, is a global society advancing human well-being through sustainable technology for the built environment. The Society and its more than 56,000 members worldwide focus on building systems, energy efficiency, indoor air quality, refrigeration and sustainability. Through research, standards writing, publishing, certification and continuing education, ASHRAE shapes tomorrow's built environment today. More information can be found at [www.ashrae.org/news](http://www.ashrae.org/news).

Like us on Facebook | Follow us on Twitter | Join the conversation on ASHRAEXCHANGE



# News

1791 Tullie Cir. NE | Atlanta, Ga. 30329-2305 | 404-636-8400 | [www.ashrae.org](http://www.ashrae.org)

For Release:  
 Aug. 24, 2016  
 Contact: Jodi Scott  
 Public Relations  
 678-539-1140  
[jscott@ashrae.org](mailto:jscott@ashrae.org)

## ASHRAE LowDown Showdown Modeling Challenge Teams Recognized

ATLANTA – Eight teams in the second annual ASHRAE Lowdown Showdown worked to find the right dose of designing and modeling to get a health care facility to net zero or below.

The ASHRAE and IBPSA-USA SimBuild 2016: Building Performance Modeling Conference took place Aug. 10-12 in Salt Lake City, Utah. Some 250 people attended the event, which featured more than 100 speakers presenting practical applications of tools, case studies and papers on simulation, research and a deeper dive into current technology.

Held in conjunction with the Conference was the 2016 ASHRAE LowDown Showdown modeling challenge with eight teams and some 80 team members. The teams used currently available software to create their models for the baseline building, a 50,000 square foot, three-story outpatient health care facility in Omaha, Neb.

“The LowDown Showdown challenged teams to take their models to net zero,” Dru Crawley, a member of the Conference Steering Committee, said. “This building was particularly challenging because of its 24-hour-a-day operation and plug loads. But the teams were tremendously creative, resourceful and committed to drawing upon their team members’ strengths to create realistic solutions to the challenge.”

A list of participants and a summary of their projects can be found at [www.ashrae.org/simbuild2016#lowdown](http://www.ashrae.org/simbuild2016#lowdown).

Each team was required to present their results at the Conference. Recognition awards were presented to

- Most Practical – Energy Derailment
- Most Creative – The EUI Evangelists
- Best Teamwork – Quest for Zero
- Most Innovative Workflow – Insane Energy Savers
- Best Energy Use – The DeeBees

Other participating teams were:

- The BEM Bang Theory
- Outpatient Zero
- Newbie Energizers

“The ASHRAE LowDown Showdown seeks to broaden the industry’s ability to engage architects, engineers, designers and energy modelers to create an effective workflow and an outstanding design,” Dennis Knight, Conference chair, said. “The teams demonstrated beyond a doubt that better build models can be created more efficiently when drawing upon the experience and creativity of the various professionals working together.”

The larger challenge for the Showdown is to communicate these experiences to the industry at large so others can learn and improve their professional development, he said. Each team was required to produce a results spreadsheet, a poster and a one-page narrative. These items are posted on the challenge’s Webpage along with the names of the team members.

In addition to the Lowdown Showdown, the Conference itself featured some 100 presentations, which are available in the on-demand Virtual Conference. To register for the Virtual Conference, visit <https://www.ashrae.org/virtualconferences>. The cost is \$129, ASHRAE members (\$179, non-members).

IBPSA-USA is the United States regional affiliate of the [International Building Performance Simulation Association \(IBPSA\)](http://www.ibpsa.org). The mission of IBPSA-USA is to advance and promote the science of building simulation in order to improve the design, construction, operation and maintenance of new and existing buildings in the United States.